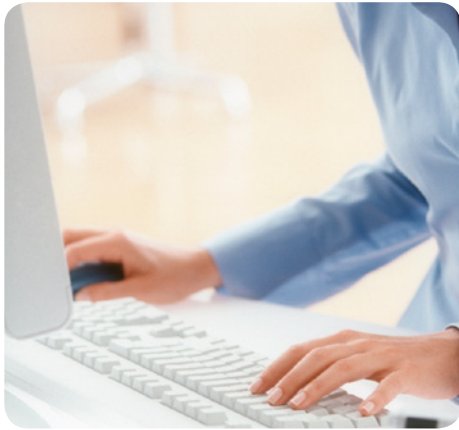


# OMNIKEY® 3821 PIN Pad Reader



## DESKTOP PIN PAD SMART CARD READER

- **Plug-and-Play** – Designed for plug-and-play to facilitate easy device installation and automatic configuration
- **Readily Compliant** – Multiple language support and compliant with all relevant industry standards for easy integration into PC environments
- **Secure Entry** – Common Criteria EAL 3+ (Class 2/3) certified to allow Secure PIN Entry (SPE) for signature and log-on application
- **Suits Any Application** – Compatible with virtually any contact smart card and a wide range of PC operating system

The OMNIKEY® 3821 reader offers all the trusted performance of OMNIKEY readers in a robust housing. Featuring a keypad for secure PIN (Personal Identification Number) entry, the reader is able to display messages from the application and has a display with two lines indicating the secure mode with a special sign. The commands for the Secure PIN Entry (SPE) can also be given in five languages by default.

Featuring Common Criteria EAL3+ security certification, the OMNIKEY 3821 is designed to safeguard against viruses, worms or phishing attacks. The content on the smart card is protected by a PIN to prevent unauthorized

copying or use of the information stored on the card. Sensitive data is neither stored on the PC nor communicated via insecure PC / reader connection but remains within the card / reader environment.

Easy to install, the OMNIKEY 3821 desktop PIN pad reader is ideally suited for online banking and digital signature applications as well as other online transactions, loyalty programs and healthcare solutions.

\* For driver download, please visit [www.hidglobal.com/omnikey](http://www.hidglobal.com/omnikey).

## FEATURES:

- Usage within an application is based on standardized interfaces like PC / SC, OCF (Open Card Framework) or CT-API.
- Meets the major standards of any financial institution, including ISO 7816, EMV 2000, Microsoft WHQL, USB, CCID, PC / SC, HBCI (Home Banking Computer Interface) and PC-2001 Specification
- Supports all major operating systems
- Graphical display with 2 x 16 characters and secure mode indicator
- SPE support for multiple languages including English, French, German, Italian and Spanish
- Complies with all relevant international industry standards
- Features a robust housing and optimized with an extra-long USB cable for added convenience

## SPECIFICATIONS

<b>Base Model Number</b>	OMNIKEY <sup>®</sup> 3821
<b>Dimensions</b>	5.51" 3.14"x 1.97" (140 x 80 x 50 mm)
<b>Weight (with cable)</b>	6.1 oz (173 g)
<b>Power Supply</b>	Bus powered
<b>Operating Temperature</b>	32-131 °F (0-55 °C)
<b>Operating Humidity</b>	10-90% rH
<b>HOST INTERFACE</b>	
<b>Host Interface</b>	USB 2.0 CCID <sup>1</sup> (also compliant with USB 1.1)
<b>Transmission Speed</b>	12 Mbps (USB 2.0 full speed)
<b>SMART CARD INTERFACE</b>	
<b>Standards</b>	ISO 7816 & EMV <sup>2</sup> 2000 Level 1
<b>Protocols</b>	T=0, T=1, 2-wire: SLE 4432/42 (S=10); 3-wire: SLE 4418/28 (S=9), I <sup>2</sup> C (S=8)
<b>Card Size</b>	ID-1 (full size)
<b>Smart Card Interface Speed</b>	420 Kbps (when supported by card)
<b>Smart Card Clock Frequency</b>	Up to 8 MHz
<b>Supported Card Types</b>	5V, 3V and 1.8V Smart Cards, ISO 7816 Class A, B and C
<b>Power to Smart Card</b>	60 mA
<b>Smart Card Detection</b>	Movement detection with auto power-off / Automatic detection of smart card type / Short circuit and thermal protection
<b>8-Pin Handling</b>	C4 / C8 supported
<b>PC / SC Driver Support</b>	Windows <sup>®</sup> 2000, 2003/2008 Server, Windows <sup>®</sup> CE 5.0 / CE.NET / CE 6.0 (depending on hardware), Windows <sup>®</sup> XP / Vista / 7 (32 bit / 64 bit), Linux <sup>®</sup> and Mac <sup>®</sup> OS X (10.5.x Intel)
<b>Embedded Technology</b>	Please contact us for further details
<b>Status Indicator</b>	Symbols in display (for ready / card operation / secure mode)
<b>Color</b>	Two-tone gray
<b>Options</b>	Customer-specific logo, label and colors: available upon request
<b>Composition</b>	ABS
<b>Connector Cable</b>	70.9" (180 cm)
<b>Durability</b>	100,000 insertions
<b>Meantime Between Failure (MTBF)</b>	500,000 hours
<b>Compliance / Certification</b>	Microsoft <sup>®</sup> WHQL <sup>3</sup> , EMV <sup>2</sup> 2000 Level 1, ISO 7816, HBCI <sup>4</sup> , USB 2.0 (USB 1.1 compatible), CCID <sup>1</sup> , Common Criteria EAL 3+, GSA FIPS 201 approved product list
<b>Safety / Environmental</b>	CE, WEEE, FCC, UL, RoHS
<b>Warranty</b>	Two-year manufacturer's warranty. (For drivers, see complete lifetime support policy.)

1 = Chip Card Interface Device, 2 = Europay<sup>®</sup> MasterCard<sup>®</sup> Visa<sup>®</sup>, 3 = Windows<sup>®</sup> Hardware Quality Lab, 4 = Homebanking Computer Interface



North America: +1 949 732 2000  
Toll Free: 1 800 237 7769  
Europe, Middle East, Africa: +44 1440 714 850  
Asia Pacific: +852 3160 9800  
Latin America: +52 55 5081 1650

hidglobal.com

## ASSA ABLOY

An ASSA ABLOY Group brand

© 2012 HID Global Corporation. All rights reserved. HID, the HID logo, OMNIKEY and the OMNIKEY logo are trademarks or registered trademarks of HID Global in the U.S. and/or other countries. All other trademarks, service marks and product or service names are trademarks or registered trademarks of their respective owners.  
2012-04-03-OK-3821-en-ds Rev. 10/2011